



V2 CREATIVE ENGINEERING
— RISE YOUR STANDARDS —

PRODUCT CATALOGUE



www.v2creative.in



ABOUT US

- V2 Creative is a leading trading and manufacturing company specializing in delivering high-quality material handling products and reliable solutions across diverse industries. Established in 2016, we have built a reputation for innovation, integrity, and excellence. With a strong presence in the market and various industries across the state, our company bridges the gap between manufacturing efficiency and trading expertise.
- V2 Creative Engineering is a trusted manufacturer and solution provider of overhead crane - EOT cranes, HOT cranes, jib cranes, underslung crane, gantry cranes, crane structures and customized material handling solutions. We are committed to delivering safe, efficient, and innovative lifting solutions that empower industries to perform at their best.
- We also deal with world class KITO-CROSBY group products, geared motors & busbar from German & Italy.

PRODUCT RANGE

- Single Girder EOT Cranes.
- Double Girder EOT Cranes.
- Underslung EOT Cranes.
- HOT Cranes.
- A-Frame or Gantry Cranes.
- Semi Gantry Cranes.
- Pillar Mounted JIB Cranes.
- Pillar Mounted KBK Profile JIB Cranes.
- Wall Mounted Type JIB Cranes.
- Articulate Type JIB Cranes.
- Steel XY Rail Light Crane Systems.
- Aluminum Light Crane Systems.
- Portable Aluminum Crane Systems.
- Monorail Systems.
- Supporting Structures & Customized MHE's.

Product Line



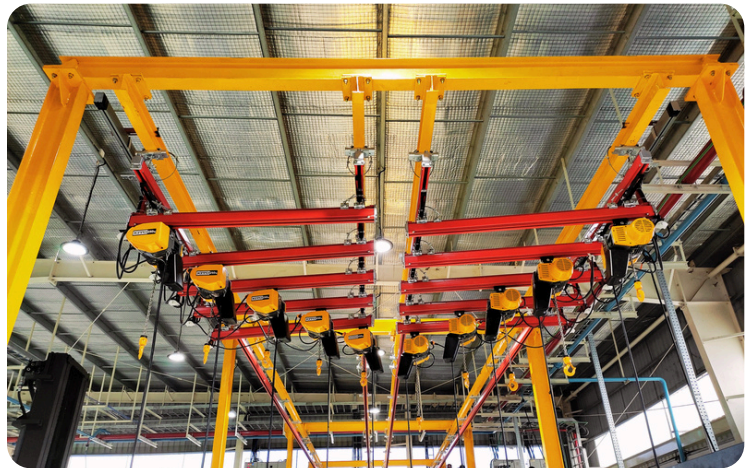
Single Girder Cranes
Capacity - 1 T to 20T



Double Girder Cranes
Capacity - 3T to 50T



Underslung Cranes
Capacity - 125kg to 5T



Steel Light Profile Crane with Structure
Capacity - 125 kg to 2T



Portable Aluminium Light Crane
Capacity - 60 kg to 500 kg



Aluminium Light Profile Crane with Structure
Capacity - 125 kg to 2T



Pillar Mounted Jib Cranes
Capacity - 125kg to 5T



Pillar Mounted KBK Jib Crane
Capacity - 125 kg to 1T



A-Frame or Gantry Crane
Capacity - 125 kg to 10T



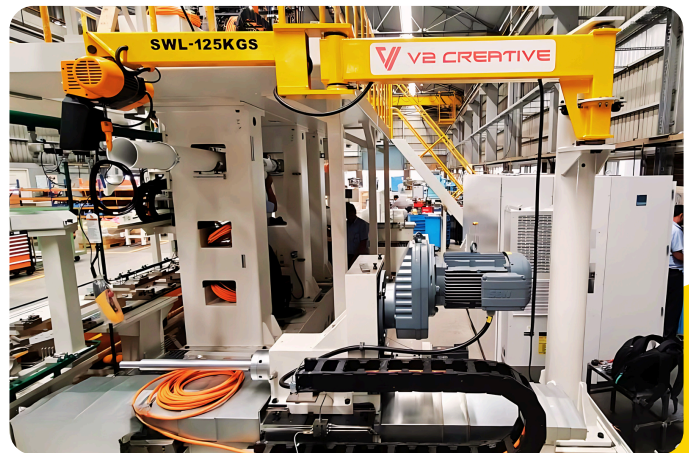
Wall Mounted Light Profile Jib Crane
Capacity - 125kg to 1T



Wall Mounted Jib Crane
Capacity - 125kg to 2T



Monorail System
Capacity - 125kg to 5T



Articulate Type Jib Crane
Capacity - 125kg to 1T

EXCLUSIVE DEALER FOR KITO CROSBY-JAPAN & EEPOS-GERMAN



KITO ER2 SERIES ELECTRIC CHAIN HOIST

KEY FEATURES

- Available with Hook, Plain, Gear & Motorized Trolley Suspension.
- Available in Single Speed & Dual Speed (Inverter with inbuilt CH meter).
- Friction Clutch, Upper-lower limit switch & Fail safe Electromagnetic Disc Brake as Triple safety.
- Nickel-plated load chain.
- Hoist body - IP55, Push button control - IP 65 & it operates -20 to 40 °C (-4 to 104 °F)



KITO EQ SERIES ELECTRIC CHAIN HOIST

KEY FEATURES

- Light-weight and compact.
- Available with Hook, Plain & Motorized Trolley Suspension.
- Inverter (inbuilt CH-Meter) as standard.
- Durable pull-rotor drum brake.
- No load high speed operation (30% faster)
- Electronic overload limiter & friction clutch & upper-lower limit switch as Triple safety.



KITO WIRE ROPE HOIST



SINGLE GIRDER

DOUBLE GIRDER

KEY FEATURES

- Inverter (inbuilt CH-Meter) is provided as a standard supply.
- No load high speed operation (30% faster).
- Low headroom & Full 360° Rope Guide.
- Rope Drum with black oxide coating and greasing provides corrosion protection.
- Externally adjustable upper/lower limit switch & Electronic overload limiter



KITO ED SERIES

KEY FEATURES

- Single phase power supply (240V).
- Lifting capacities from 60KG to 480KG.
- Maximum lifting speed of 21 meters/minute.
- High performance mechanical brake with friction clutch.
- Minimized headroom due to compact design.



KITO CB SERIES

KEY FEATURES

- Capacities ranging from 0.5T to 50T.
- Inhouse made grade 100 load chain
- Dry type asbestos free mechanical brake
- Double pawl spring mechanism
- Gear case and hand wheel cover on both sides.



KITO CX SERIES

KEY FEATURES

- Ultra compact design and extremely light weight
- Grade 100 nickel plated load chain
- Overload Limiter as standard



KITO LB SERIES

KEY FEATURES

- Compact and easy to carry
- Grade 100 Nickel Plated chain
- Easy to do maintenance
- Original free wheel mode for the efficient work
- Load signal and OLL as optional



KITO LX SERIES

KEY FEATURES

- Lightweight and compact
- Kito's original free chain adjusting mechanism
- Nickel-plated chain
- Hook latch with safety mechanism



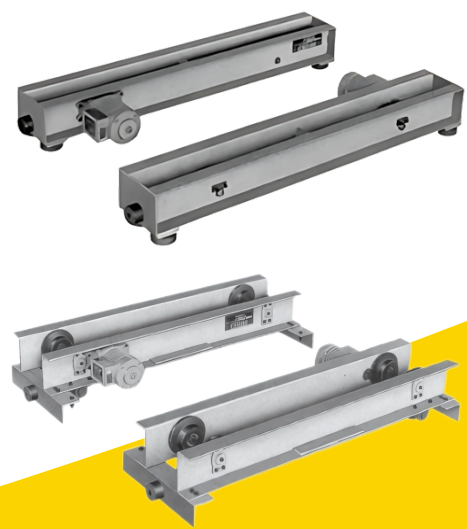
Twin Hook TWER2M
250kg to 5t



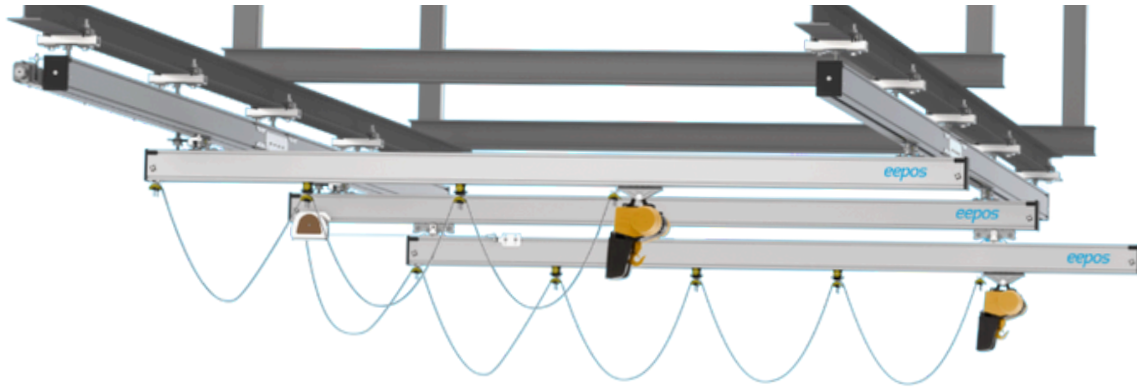
Explosion-Proof RESM
500kg to 5t



Food Grade Hoist ER2
125kg to 5t



KITO END CARRIAGES - SG, DG & US ELECTRIC OVERHEAD TYPE



KEY FEATURES

- Aluminum rails are German-engineered, modular, and ergonomic crane solution, lightweight yet capable of smooth manual handling under high load capacity.
- They are lightweight, easy to handle & install, and Corrosion-resistant & low-maintenance with extended durability.
- Aluminum rails are precision-engineered to maximize productivity and efficiency by minimizing pulling force even under heavy loads while ensuring smooth, accurate, and stable operation with minimal noise.



GUNNEBO
Industries

Crosby®



Chain



C-grab Duo, CGD



Master Grab, MG



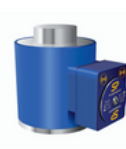
Master Grab, MGD



Chain Slings



Radiolink Plus



Loadsafe Compression Loadcell



Wireless Load Shackles



Master Links



Master Grab
MG GrabIQ



Coupling
Link G



Foundry Hook
OKE



Sling Hook
EGKN



Sling Hook
EKN (With Latch)



BSH Type 0.8t to 3.2t | BSL Type 3.2t to 10t



Round Sling RE Type 1t to 10t



Eight Sling EE Type 500kg to 5t



RG Series 10t to 100t



Safety Hook
GBK



Safety Hook
BK



Bow Shackle
No. 854



Bow Shackle
No. 855



Dee Shackle
No. 834



Super Shackle
No. 858



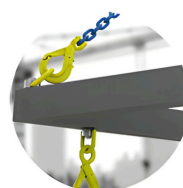
De-Centered Lifting Point
DLP



Ball-Bearing Lifting Point
BLP



Rotating Eye Lifting Point
RELP



Rotating Lifting Point
RLP



KITO SUPER MAG

Flat/Round steel type
KRD series
Flat Steel 60KG to 1.2Ton
Round Steel 80KG to 1.6Ton

SERVICES

INSTALLATIONS

- Installation & Commissioning of Hoist & Cranes.
- Crane Support Structures, Gantry Girders & Rails.
- Electrical Panel Boards.
- Steel & Aluminum Light Crane Systems.
- Bus Bar system.

MAINTENANCE

- Annual Maintenance Contracts.
- Safety & Operation Seminars.
- Regular Health Check-Ups.
- Safety/Maintenance Training.
- Spare Parts, Inventory Management.
- Refurb & Modification of Existing Cranes & Structures.

SPARES



CABLE
FESTOONING



DSL BUS BAR



KITO BUS BAR



CURRENT COLLECTOR



KBK
ACCESORIES



LIMIT SWITCH



24 PIN
CONNECTORS



ANTI COLLISION



RADIO REMOTE



CABLE TROLLIES



OK 101



OK 102



INDICATION
LAMP



ALU RAIL
ACCESORIES



LUBRICATION TUBE



CONTROL
PENDENT



PENDENT SPARES



CONTROL PANEL



RUBBER BUFFER
STOPPERS



LT END CARRIAGE
WHEELS & PINION



CHEMICAL
ANCHORING BOLTS



WIRE ROPE



VFD



GEARED MOTOR

For any Service related queries please call



+91 90350 94188 | 90350 94189



service@v2creative.in

www.v2creative.in

OUR CUSTOMERS



NOTES :

CONTACT US



V2 Creative Engineering

Sy. No. 175, Plot No.128 to 133, Doddabidrukallu, Near Tippenahalli Govt. Hospital/Park, BBMP MSW Plant Road, Bangalore-560073.



+91 96320 40435



sales@v2creative.in